



Art.no. **8564**

Art.no. **8564**

Spill containment pallet in painted steel, with grate in galvanized steel, suitable for the storage up to 4 drums of 208 l.

Art.no. **8565**

Spill containment pallet in painted steel, with grate in galvanized steel, suitable for the storage up to 8 drums of 208 l.

Art. no.	Suitable for	Sump capacity	Weight	Dimensions (LxWxH) (mm)
8564	4 drums of 208 l	335 l	94 kg	1340x1250x300
8565	8 drums of 208 l	680 l	202 kg	2720x1250x300



Art.no. **8566**

Art.no. **8567**

Art.no. **8566**

Metal barrel rack, stackable, for the horizontal storage of up to 3 drums of 60 l. Suitable for the storage on spill containment pallet art. no. 8565.

Art.no. **8567**

Metal barrel rack, stackable, for the horizontal storage of up to 2 drums of 208 l. Suitable for the storage on spill containment pallet art. no. 8565.

Art. no.	Suitable for	Weight	Dimensions (LxWxH) (mm)
8566	3 drums of 60 l	37 kg	1335x600x810
8567	2 drums of 208 l	32 kg	1335x600x810



Art.no. **8568**

Art.no. **8568**

Metal barrel rack, stackable, for the horizontal storage of up to 3 drums of 208 l. Suitable for the storage on spill containment pallet art. no. 8565.

Art. no.	Suitable for	Weight	Dimensions (LxWxH) (mm)
8568	3 drums of 208 l	67 kg	1960x600x810



Art.no. **8569**

Art.no. **8563**

Art.no. **8569**

Metal barrel rack, stackable, for the horizontal storage of up to 2 drums of 208 l. Suitable to be put up on the floor.

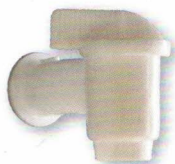
Art.no. **8563**

Spill containment pallet in galvanized steel plate, without grate, to be placed under the metal barrel rack art. no. 8569.

Art. no.	Suitable for	Sump capacity	Weight	Dimensions (LxWxH) (mm)
8569	2 drums of 208 l	-	36 kg	1500x550x850
8563	-	270 l	48 kg	1390x1160x170



Art.no. **2271**



Art.no. **2270**
Art.no. **2272**

Art.no. **2270**

Gravity cock, in polyethylene, connection thread 3/4" BSP (M), with manual shut-off valve, suitable for the use with horizontally placed drums of 60 l or 208 l.

Art.no. **2271**

Gravity cock, in brass, connection thread 3/4" BSP (M), with automatic shut-off valve, suitable for the use with horizontally placed drums of 60 l or 208 l.

Art.no. **2272**

Gravity cock, in polyethylene, connection thread 2" BSP (M), with manual shut-off valve, suitable for the use with horizontally placed drums of 208 l.

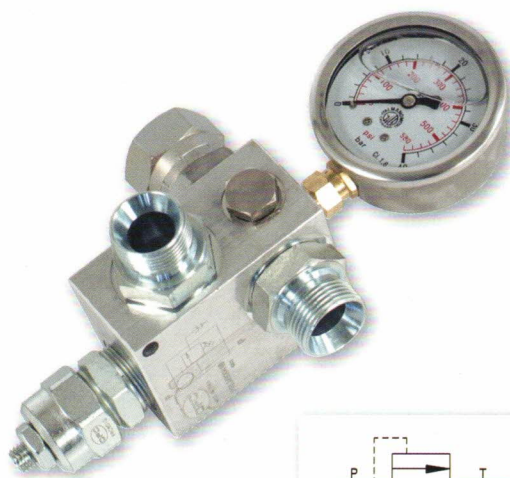
Art.no. **2273**

Gravity cock, in aluminium, connection thread 2" BSP (M), with manual shut-off valve, suitable for the use with horizontally placed drums of 208 l.



Art.no. **2273**

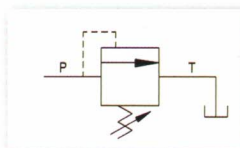
new



Pressure relief valve, suitable for lubricants pipeworks. Body in aluminium alloy and cartridge in galvanized steel.

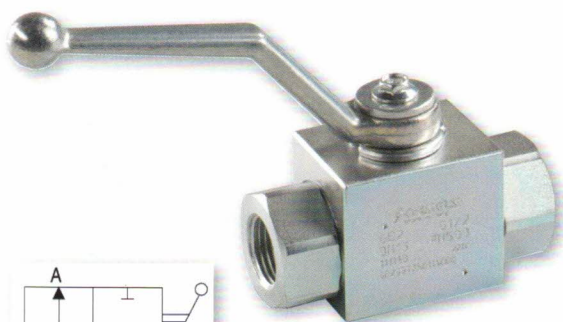
Includes glycerin manometer with graduation 0–60 bar and regulation screw for the selection of the max. applicable pressure.

Connections (BSP): inlet F – outlet M.

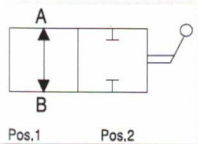


Art. no.	Connections	Regulation range	Max flow rate	Max pressure
2259	1/2" BSP	from 5 to 50 bar	70 l/min	70 bar
2260	3/4" BSP	from 5 to 50 bar	80 l/min	70 bar
2258	1" BSP	from 5 to 50 bar	90 l/min	70 bar

Pipework components



High pressure ball valve, with full port and lever handle, suitable for lubricants pipeworks. Body in galvanized steel. Connections (BSP): inlet F – outlet F.



Art. no.	Connections	Max flow rate	Max pressure
7244	1/4" BSP	30 l/min	500 bar
7242	3/8" BSP	50 l/min	500 bar
7241	1/2" BSP	80 l/min	500 bar
7240	3/4" BSP	120 l/min	350 bar
7239	1" BSP	160 l/min	350 bar
7238	1 1/4" BSP	160 l/min	280 bar

PATENT PENDING

Art.no. **2269**

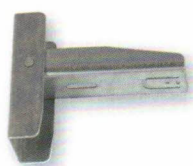
Hydraulic safety screw coupling assembly with 4 gaskets, suitable for the use in hydraulic suction and dispensing lines in combination with pneumatic oil pumps.

Ideal to prevent a potential risk of air suction in suction lines which are used continuously.

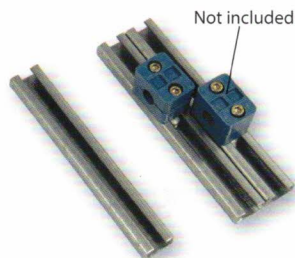
Connection threads on coupling and connector 3/4" BSP (F), with enlarged internal circuit permitting an improved oil flow.



new



Art.no. **9872**



Art.no. **9843**

Art.no. **9843**

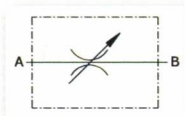
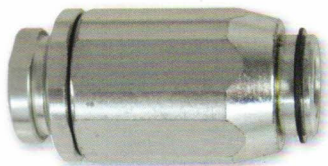
Metal bar 28x30 mm, suitable for the mounting of fixation clamps (F).

Art.no. **9872**

Metal L – bracket, suitable for the fixation overhang of rigid pipes.

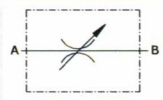


Flow regulator valve, conical type, unidirectional. Body in galvanized steel.
Connections (BSP): inlet F – outlet F.



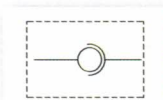
Art. no.	Connections	Regulation range	Max pressure	Max flow rate
6654	1/2" BSP	from 0 to 50 l/min	350 bar	50 l/min
6655	3/4" BSP	from 0 to 80 l/min	300 bar	80 l/min
6656	1" BSP	from 0 to 110 l/min	250 bar	110 l/min

Flow regulator valve, 90° - elbow type, unidirectional. Body in galvanized steel.
Connections (BSP): inlet F – outlet F.



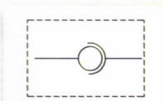
Art. no.	Connections	Regulation range	Max pressure	Max flow rate
6660	1/2" BSP	from 0 to 50 l/min	320 bar	50 l/min
6661	3/4" BSP	from 0 to 80 l/min	300 bar	80 l/min
6662	1" BSP	from 0 to 110 l/min	250 bar	110 l/min

Swivel joint, straight type, with ball valve, self - lubricating. Body in galvanized steel.
Connections (BSP): inlet M – outlet F.



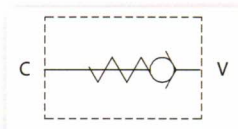
Art. no.	Connections	Max static pressure	Max dynamic pressure	Max flow rate
6690	1/4" BSP	400 bar	300 bar	25 l/min
6691	1/2" BSP	360 bar	220 bar	80 l/min
6692	3/4" BSP	310 bar	200 bar	120 l/min
6693	1" BSP	280 bar	150 bar	150 l/min
6694	1 1/4" BSP	250 bar	150 bar	200 l/min

Swivel joint, 90° - type, with ball valve, self - lubricating. Body in galvanized steel.
Connections (BSP): inlet M – outlet F.



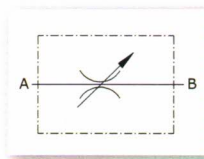
Art. no.	Connections	Max static pressure	Max dynamic pressure	Max flow rate
6695	1/4" BSP	400 bar	300 bar	25 l/min
6696	1/2" BSP	360 bar	220 bar	80 l/min
6697	3/4" BSP	310 bar	200 bar	120 l/min
6698	1" BSP	280 bar	150 bar	150 l/min
6699	1 1/4" BSP	250 bar	150 bar	200 l/min

Non-return valve with high pressure gate valve, suitable for lubricants pipeworks. Body in galvanized steel. Opening pressure 0.5 bar (on demand also 4 bar or 8 bar). Connections (BSP): inlet F – outlet F.



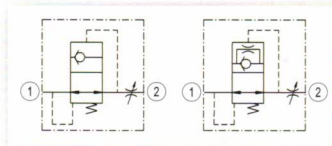
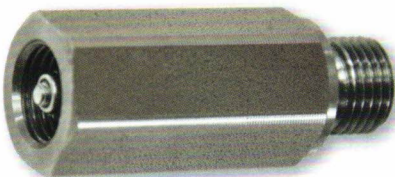
Art. no.	Connections	Max pressure	Max flow rate
6639	1/4" BSP	400 bar	30 l/min
6641	1/2" BSP	350 bar	90 l/min
6643	3/4" BSP	300 bar	130 l/min
6640	1" BSP	280 bar	180 l/min
6648	1 1/4" BSP	260 bar	250 l/min

Pressure reduction valve with high pressure gate valve, suitable for lubricants pipeworks. Body in galvanized steel. Connections (BSP): inlet F – outlet F.



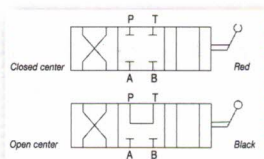
Art. no.	Connections	Regulation range	Max pressure	Max flow rate
6650	1/2" BSP	from 5 to 50 bar	320 bar	45 l/min
6651	3/4" BSP	from 5 to 50 bar	300 bar	85 l/min
6652	1" BSP	from 5 to 50 bar	250 bar	140 l/min

Parachute valve for lubricants pipeworks: blocks automatically the flow of lubricants inside of the pipework in case of leakages caused by failures or cracks of pipe components. Body in galvanized steel.



Art. no.	Connections	Regulation range	Max pressure	Max flow rate
6670	1/2" BSP	from 10 to 70 l/min	350 bar	80 l/min
6671	3/4" BSP	from 30 to 140 l/min	350 bar	150 l/min
6672	1" BSP	from 40 to 170 l/min	350 bar	180 l/min

4-way evacuation valve in cast iron, open center, with limited pressure drops. With 2 fixation holes Ø 8,5 mm. Suitable for the suction and discharge of waste oils and waste antifreeze.



Art. no.	Connections	Max pressure	Max flow rate
6675	1/2" BSP	250 bar	90 l/min
6676	3/4" BSP	160 bar	120 l/min
6677	1" BSP	160 bar	150 l/min
6678	1 1/2" BSP	100 bar	200 l/min

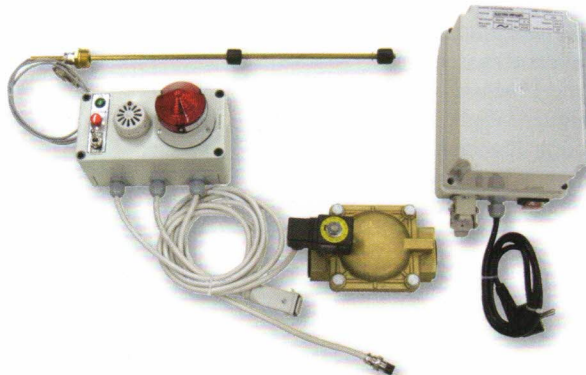


Art.no. **8309**

Overfill protection kit for waste oil, stops the oil flow immediately when the maximum filling level in a tank has been reached.

The kit is composed of:

- high level probe, with two sensors for indication of maximum and stop level, with connection 3/4" BSP (M) and length 300 mm;
- warning light with horn, art. no. 8920;
- solenoid-actuated oil flow shut-off valve, with connection 1" BSP (M), art. no. 7365;
- electronic control switch;
- transformer / stabilizer 110-230 VAC – 24 VDC, art. no. 6528.



Art.no. **8753**

Digital, ultrasonic level indicator, suitable for the use in 208 l – drums.

It is easy to install and easy to read. It is inserted into a drum through its 3/4" – opening and is also fixed there.

Automatic measurement: each 20 minutes the drum level is automatically controlled, without showing any value on the display. Once the level has reached a value between 20 l and 10 l, the display will show a first alarm, once the level has reached then less than 10 l a second alarm will be displayed.

Instantaneous measurement: if the drum level is between 145 l and 20 l the exact product quantity is displayed.

The level indicator is fed by an AAA alkaline battery.



Art.no. **8752**

Mechanical level gauge with floater and analogical measuring scale, suitable for 60 and 208 l – drums.

It is easy to install and easy to read; it is inserted into a drum through its 3/4" – opening and is also fixed there. On demand also available with measuring scale in gallons.



Art.no. **7340**

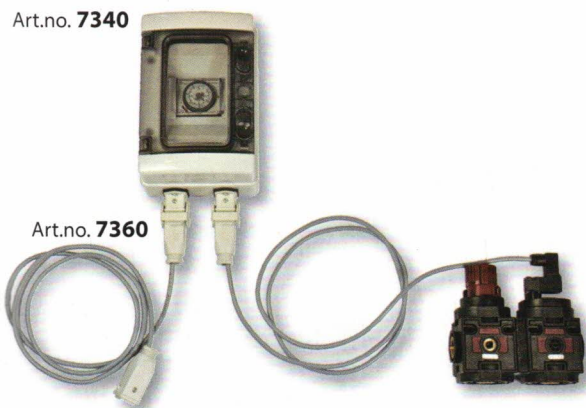
Timer (daily/weekly) for the preset activation of solenoid valve art. no. 7360.

Art.no. **7360**

Solenoid-actuated security valve, 24 VDC, connections 1/2" BSP, for the shut-off of the compressed air supply.

If the valve is installed into the compressed air circuit, the compressed air from the air pipe is discharged at the end of the labor time. This can be done by hand or also automatically if the valve is connected with the timer, art. no. 7340.

Electric power supply through transformers / stabilizers art. nos. 6528 or 6529.



Monitoring

Art.no. **3185**
Art.no. **3185/110**

Mobile low level gravity waste oil drainer, suitable for the draining of motor oil, gear oil or differential oil from trucks and passenger cars. Available with collection capacity of 70 l and 110 l, with anti splash grid and removable, lateral antisplash guard (optional). The unit can be discharged by gravity through the laterally mounted 3/4" drain valve or by using an evacuation pump with suction hose and female quick coupling to be connected to the male coupling installed on the drainer (see evacuation kit art. no. 2044 + 2264 on page 115!).



Art. no.	Collection capacity	Connections	Weight	Dimensions (LxWxH) (mm)
3185	70 l	3/4" BSP (F)	26 Kg	800x560x180
3185/110	110 l	3/4" BSP (F)	38 Kg	1400x560x180



Art.no. **3185/20**

Mobile low level gravity waste oil drainer such as above, but in height-reduced version, ideal for the use with passenger cars with sports chassis.



Art. no.	Collection capacity	Connections	Weight	Dimensions (LxWxH) (mm)
3185/20	22 l	3/4" BSP (F)	18 Kg	800x500x80



Art.no. **3254**
Art.no. **3254/110**

Mobile low level gravity drainer, suitable for the draining of waste oils and antifreeze from trucks and passenger cars by using the included pump kit for the eventual refilling of the liquid into the motor circuit after finishing the service.

Available with collection capacity of 70 l and 110 l, with anti splash grid.

The pump kit art.no. 3246 consists of a pneumatic rotary pump (art.no. 1058, see page 52), pressure regulator with manometer, suction hose and dispensing hose with control gun and rigid outlet pipe.

On demand also pump kit art.no. 3248 with pneumatic diaphragm pump (art.no. 8319, see page 115) instead of pneumatic rotary pump is available.



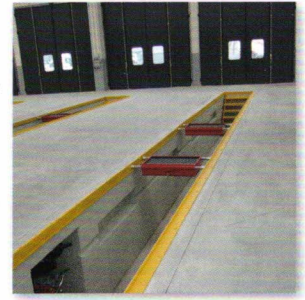
Art. no.	Compressed air supply	Outlet pressure	Delivery	Collection capacity	Connections	Weight	Dimensions (LxWxH) (mm)
3254	2-4 bar	4 bar	10 l/min	70 l	1/2" BSP (F)	34 Kg	800x560x180
3254/110	2-4 bar	4 bar	10 l/min	110 l	1/2" BSP (F)	46 Kg	800x560x285



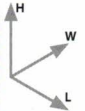
Waste oil

Art.no. **3186**
Art.no. **3186/110**

Pit gravity waste oil drainer, suitable for the draining of motor oil, gear oil or differential oil from trucks and passenger cars. Available with collection capacity of 70 l and 110 l, with anti splash grid and metal rollers. Suitable for the use in service pits between the pit rails. It is possible to adapt the width according to the pit dimensions. The unit can be discharged by gravity through the laterally mounted 3/4" drain valve or by using an evacuation pump with suction hose and female quick coupling to be connected to the male coupling installed on the drainer.

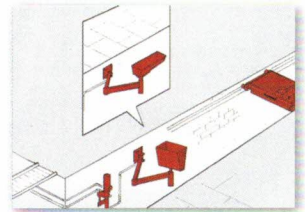


Art. no.	Collection capacity	Width adjustment range (mm)	Connections	Weight	Dimensions (LxWxH) (mm)
3186	70 l	Min 900 - Max 1300	3/4" BSP (F)	27 Kg	800x560x180
3186/110	110 l	Min 900 - Max 1300	3/4" BSP (F)	39 Kg	800x560x285



Art.no. **3292**

Waste oil draining kit for the installation in service pits, with metal collection bowl of 10 l capacity incl. removable anti splash grid and height-adjustable, telescopic tube with wall mounted swivel arm in galvanized steel.



Art. no.	Diameter collection bowl	Capacity collection bowl	Max extension height collection bowl	Max extension length swivel arm	Connections	Weight
3292	400 mm	10 l	530 mm	1340 mm	1" BSP (F)	10 Kg

Art.no. **2046**
Art.no. **2044**

Waste oil evacuation and transfer kit, consisting of a 1:1 – (art. no. 2044) or a 2:1 – (art. no. 2046) single acting pneumatic piston pump, wall bracket, 1.5 m - rubber suction hose ø 1" and foot valve with stainless steel strainer.



Art.no. **2264**

Waste oil and waste antifreeze quick coupling kit, consisting of hydraulic quick coupling with connection 1" BSP (F), hydraulic quick connector with connection 1" BSP (F) and connection adapter with connection 1" BSP (MM), with non-return valve. The kit is necessary to carry out the evacuation of waste oil drainers or waste oil suction units by connecting the hydraulic quick coupling to the suction hose of evacuation kits art. no. 2046 or art. no. 2044 (instead of the installed foot valve) and the quick connector to the waste oil drainer or waste oil suction unit to be discharged.

Art.no. **2046**
Art.no. **2044**



Art.no. **2264**

Art. no.	Compressed air supply	Delivery	Compression ratio	Max outlet pressure	Connection compressed air	Connection lubricant outlet	Consumption compressed air	Weight
2046	2 - 8 bar	30 l/min	2:1	16 bar	1/4" BSP (F)	3/4" BSP (M)	240 l/min	5 kg
2044	2 - 8 bar	35 l/min	1:1	8 bar	1/4" BSP (F)	3/4" BSP (M)	210 l/min	4.5 kg

Art.no. **8319**

Pneumatic double diaphragm pump, selfpriming up to 5 m suction lift, working also in dry running condition, without any electric drive, suitable for the use also with fluids of higher viscosity and for fluids containing particles up to 3.5 mm size, body in aluminium, diaphragms in Hytrel® + PTFE, balls in PTFE, gaskets in Viton®, seats in aluminium.

Art.no. **7818**

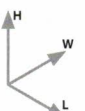
Wall mounting bracket for pneumatic diaphragm pumps art. no. 8319.



Art.no. **7818**



Art.no.	Max flow rate	Max suction lift	Comp. air supply	Connection compressed air inlet	Connections fluid Inlet - Outlet	Consumption compressed air	Weight	Dimensions (LxWxH) (mm)
8319	55 l/min	5 m	2 - 8 bar	3/8" BSP (F)	1/2" BSP (F)	200 l/min	4 kg	234x156x245



Combined units that can be used as waste oil gravity drainers, but also as waste oil suction units thanks to a pneumatic Venturi valve by which a vacuum of up to 0.8 bar inside of the container can be created when compressed air at a pressure of 7 – 10 bar is connected on it. The waste oil can be sucked with appropriate suction probes or suction adapters inserted in the dip-stick tube of the motor. For an ideal result the oil temperature should not be less than 60 – 80°C during the suction process. The unit can be used also autonomously since it does not require a continuous air supply.

Waste oil



Art.no. **3195**

Mobile, combined waste oil drainer and suction unit, with collection container of 80 l capacity, two fixed wheels and two castors, with wide collection bowl in painted steel of 10 l capacity incl. removable anti splash grid, including level gauge, suction hose, kit of suction probes in different diameters (see on page 127!), suction adapters and storage bowl. The unit can be discharged pneumatically by connecting it to compressed air through a discharge hose with curved outlet tube.

Art. no. suction probe	Ø suction probe	Suction speed at oil temperature 18°C	Suction speed at oil temperature 60°C
2995	5x3 mm	0.25 l/min	1.05 l/min
2998	8x6 mm	1.4 l/min	2.52 l/min

Art. no.	Max vacuum	Time for creating vacuum	Capacity collection container	Max collection quantity	Discharge pressure	Weight	Dimensions (LxWxH) (mm)
3195	0.8 bar	1.5 min	80 l	70 l	0.5 bar	32 Kg	460x510x1200



Art.no. **3198**

Mobile, combined waste oil drainer and suction unit, with collection container of 80 l capacity, two fixed wheels and two castors, with wide collection bowl in painted steel of 10 l capacity incl. removable anti splash grid, transparent inspection chamber of 10 l capacity, including level gauge, suction hose, kit of suction probes in different diameters (see on page 127!), suction adapters and storage bowl. The unit can be discharged pneumatically by connecting it to compressed air through a discharge hose with curved outlet tube.

The transparent inspection chamber allows to check the quality and the quantity of the sucked oil. In order to always keep a good visibility into the chamber, the unit is equipped with a device that permits to clean the internal surface by sucking a small quantity of diesel or another non-aggressive cleaning agent.

Art. no. suction probe	Ø suction probe	Suction speed at oil temperature 18°C	Suction speed at oil temperature 60°C
2995	5x3 mm	0.25 l/min	1.05 l/min
2998	8x6 mm	1.4 l/min	2.52 l/min

Art. no.	Max vacuum	Time for creating vacuum	Capacity collection container	Max collection quantity	Discharge pressure	Weight	Dimensions (LxWxH) (mm)
3198	0.8 bar	1.5 min	80 l	70 l	0.5 bar	34 Kg	460x510x1500

